

# Horn in F 1

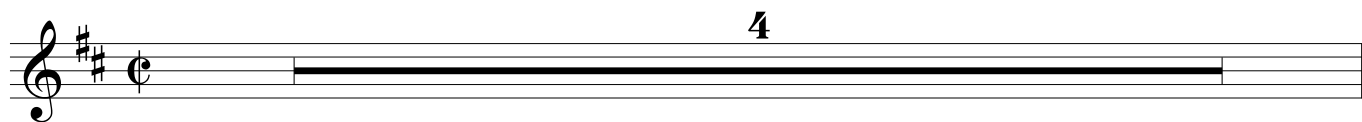
# Besame Mucho

Music: Consuelo Velazquez

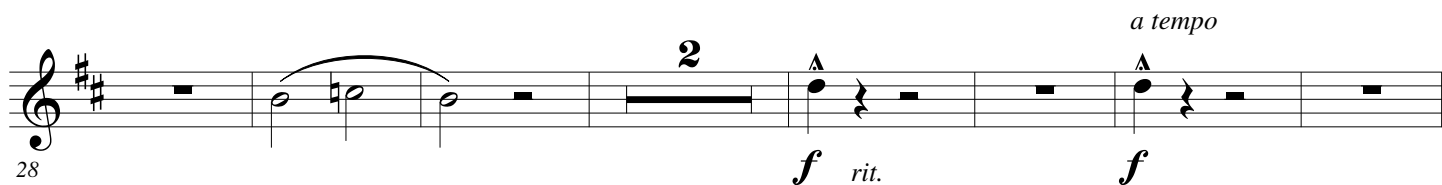
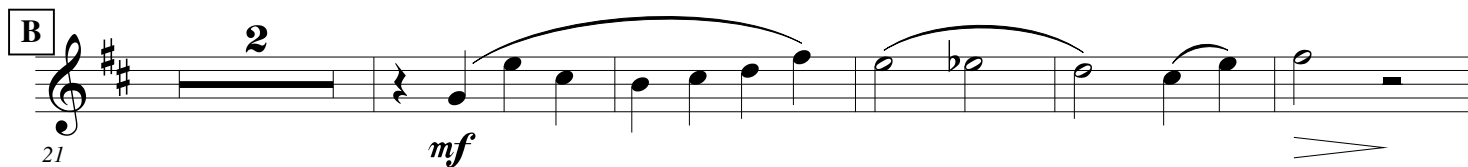
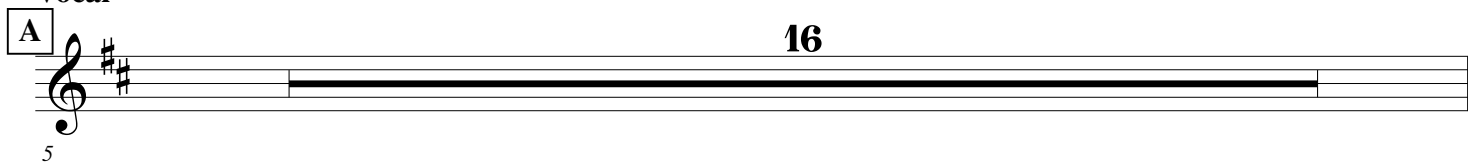
Arr: Jens Wendelboe

Rumba (♩ = c. 122)

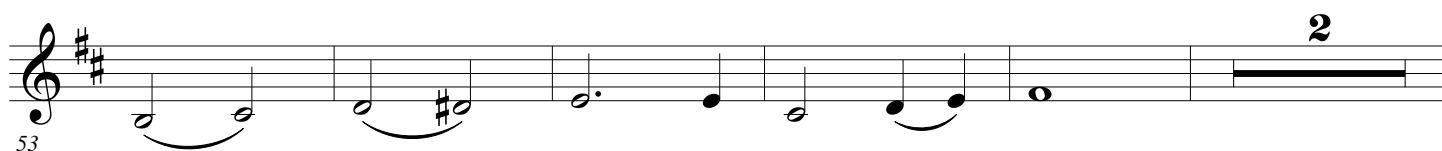
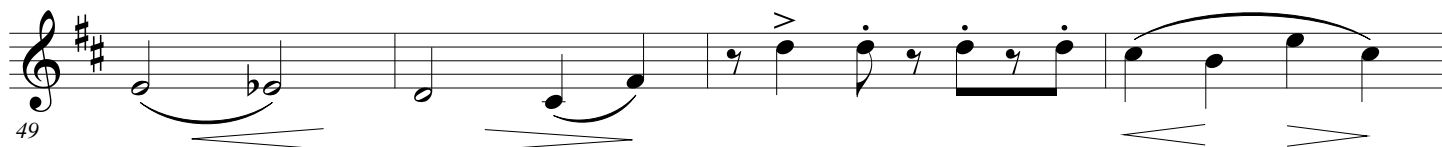
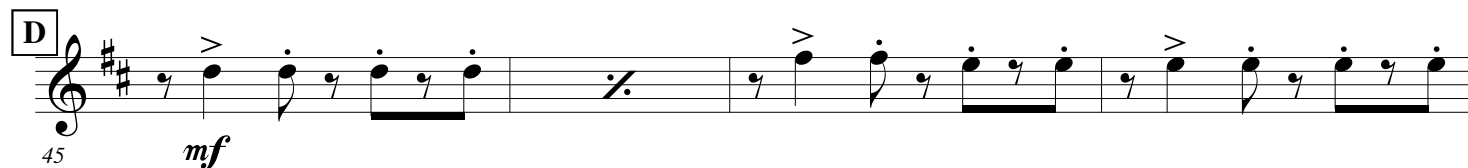
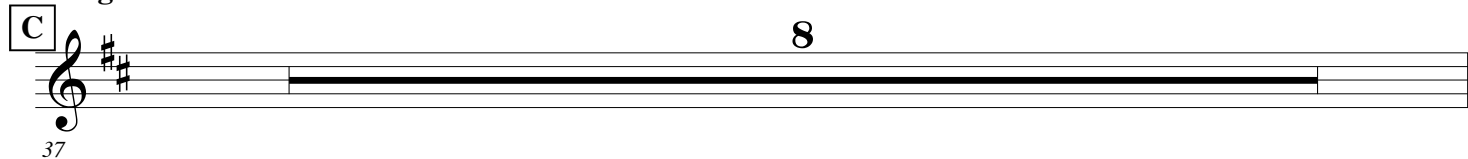
## Intro



## Vocal



## Bridge



## Orchestra

60 **E** *f* 3

65 3 3 3 3

69 *mf* 3

## Vocal, Operatic

73 **2** *fp* **F**

79 *mf*

83 **2**

89 *f* *rit.* *a tempo* *f*

## Bridge

**G** 8 93

**H**

101 *mp*

105

109

Col a voce

**I** 4

114 *rit.*

The musical score for Horn 1 of 'Besame Mucho' is written in G major (one sharp) and 4/4 time. It consists of four staves of music. The first staff begins at measure 101 with a mezzo-piano (*mp*) dynamic and features a series of eighth notes with accents. The second staff starts at measure 105 and includes slurs and accents. The third staff begins at measure 109. The fourth staff starts at measure 114 and includes a 'Col a voce' instruction, a first ending bracket labeled 'I', a four-measure rest, and a 'rit.' (ritardando) marking. The score concludes with a double bar line.